



UPCOMING SHOWS

2014-2015

March 14-15 **42nd Annual IRH Annual Gem, Mineral, Fossil & Jewelry**
Old Bethpage Restoration Village

March 27th – 29th **EFMLS Convention and Show (& Field Trip)**
Hickory Convention Center
Hickory, North Carolina

May 16th -17th **Celinka Show**
Our Lady of Mt. Carmel (need club volunteers to man a club table!)

For other Gem and Mineral shows: <http://www.amfed.org/EFMLS/calendar.htm>

www.suffolkgem.com

P. O. Box 302
Bohemia, L.I., NY
11716



*To promote cultural, educational, and
scientific interest in mineralogy, and
develop member's skills in lapidary arts
and jewelry crafts*

January 2015

THE CONGLOMERATE

The Monthly Newsletter of the Suffolk Gem & Mineral Club, Inc.

Monthly Club meetings held at the Bay Shore-Brightwaters Library, Montauk Highway, Brightwaters starting at 8:00pm.

Refreshments served at 7:30 pm.

OFFICERS

The Conglomerate Editor - Cheryl Neary
Club Webmaster - Kerry Dicker

President -	Kerry Dicker	631-277-0994	Director - Elaine Casani	631-567-3342
Vice President -	Kerry Ann Hilliard	631-277-0994	Director - Martin Besso	631-666-8023
Treasurer -	Roberta Besso	631-666-8023		
Co-treasurer	Ron Casani	631.567.3342	Director - John King	
Secretary -	Cheryl Neary	516.449.5341 cell	Director - Charles Runko)	631-486-4549
Liaison -	Charles Runko	631-486-4549	Historian - Kerry Ann Hilliard	631-277-0994

Cell phones are to be turned off during all Club meetings.

More importantly, there should be no disturbances during any guest presentations.



Happy Birthday
 Wishes!
 May Your Year Be
 Filled
 with Hugs & Kisses!

Kerry Dicker

Diane Eyester

UPCOMING MEETINGS: 2014

January 11th (Sunday)
 Holiday Dinner @ Airport Diner
 February 23, 2015-
 Note: Date change - TBD



Holiday Party

Airport Diner

@

3760 Veterans Hwy Bohemia, NY 11716
Phone: (631) 585-8404

January 11, 2015 @ 4:00pm
 (Please do not show up earlier than 4:00pm -
 the Dinner Committee needs to set-up)

Choice of Entrees - Tilapia; Chicken choices; Stead
 Tidbits; Souvlaki - pork or chicken

Cost \$32.00 -
Member in Good Standing: \$15.00

Events:

Chinese Auction & Elections of
 Slate of Officers

Slate of Officers

The following is the Slate of Officers being presented and
 voted on at the annual meeting in January (Holiday
 Dinner Meeting)

President- Cheryl Neary
 Vice-President- Kerry Dicker
 Secretary- Kerry Ann Hilliard
 Treasurer- Roberta Besso
 Directors: Elaine Casani
 John King
 Rebecca LaBarca
 Lucy Jackson

If anyone else is interested, please inform Kerry Dicker!

Let the Adventures Begin!

Ancient Babylon celebrated the new year's arrival some 4,000 years with the first new moon following the vernal equinox—the day in late March with an equal amount of sunlight and darkness—heralded the start of a new year. They marked the occasion with a massive religious festival called Akitu (derived from the Sumerian word for barley, which was cut in the spring) that involved a different ritual on each of its 11 days. Akitu celebrated the mythical victory of the Babylonian sky god Marduk over the evil sea goddess Tiamat and served an important political purpose: It was during this time that a new king was crowned or that the current ruler's divine mandate was symbolically renewed.

The early Roman calendar consisted of 10 months and 304 days, with each new year beginning at the vernal equinox; according to tradition, it was created by Romulus, the founder of Rome, in the eighth century B.C. A later king, Numa Pompilius, is credited with adding the months of Januarius and Februarius. Over the centuries, the calendar fell out of sync with the sun, and in 46 B.C. the emperor Julius Caesar decided to solve the problem by consulting with the most prominent astronomers and mathematicians of his time. He introduced the Julian calendar, which closely resembles the more modern Gregorian calendar that most countries around the world use today. *In order to realign the Roman calendar with the sun, Julius Caesar had to add 90 extra days to the year 46 B.C. when he introduced his new Julian calendar.*

As part of his reform, Caesar instituted January 1 as the first day of the year, partly to honor the month's namesake: Janus, the Roman god of beginnings, whose two faces allowed him to look back into the past and forward into the future. Romans celebrated by offering sacrifices to Janus, exchanging gifts with one another, decorating their homes with laurel branches and attending quite entertaining parties!

Happy & Healthy New Year To All!



Outside The Box

At the December meeting, all members had the opportunity to create their own dream catcher. Kits were distributed to members. Each member had the opportunity to supplement the kit and use their own special beads.

Thanks to Kerry and Kerry Ann hopefully all our dreams at night are sweet!

What is a Member in Good Standing?

One that:

- Attends (4) Meetings
- Contributes Time to Club Show or the Celinka Show-at the Club Table
(If you are unable to attend the show, there is other show activities you can volunteer for- please see Elaine or Kerry!
- Provides Refreshments for monthly meeting (You will be reimbursed- just need to bring the goodies!)

Remember-this is your club!
This club needs you to participate, in order for the club to grow-

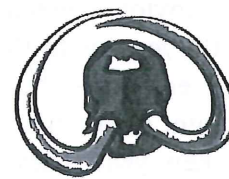
If you have any suggestions for a program, please speak to one of the Board members listed above. If you have an idea for a field trip, please speak to a Board member as well!

**February Meeting:
Scheduled for Monday February 23, 2015
{Due to President's Day Holiday and
Library closed the third Monday of the
month!}**



Rutgers Geology Museum

47th Annual Open House



SATURDAY, JANUARY 31, 2015

PRESENTATIONS IN SCOTT HALL ROOM 123

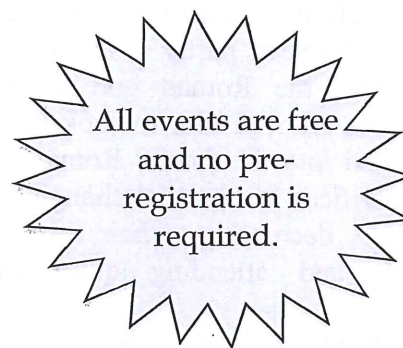
<p>10:00 am to 11:00 am</p> <p>"A Dip in the Ocean: An Interactive Exploration of How the Ocean Impacts You and How You Impact the Ocean"</p> <p><i>Presented by Janice McDonnell</i></p> <p>Rutgers University Department of Marine and Coastal Sciences</p>	<p>1:30 pm to 2:30 pm</p> <p>"The Art of the Geological Map"</p> <p><i>Presented by Dr. Don Monteverde</i></p> <p>New Jersey Geological and Water Survey Rutgers University Department of Earth and Planetary Sciences</p>
<p>11:30 am to 12:30 pm</p> <p>"Extremophilic Environments and Microbial Diversity Within"</p> <p><i>Presented by Dr. Ramaydalis Keddiss</i></p> <p>Kean University Department of General Studies</p>	<p>3:00 pm to 4:00 pm</p> <p>"Earth's Cocktail Party: Deciphering the Physics of Earthquakes with Networks of Seismic Arrays"</p> <p><i>Presented by Dr. Jean-Paul Ampuero</i></p> <p>California Institute of Technology Seismological Laboratory</p>

Mineral Sale - Scott Hall Room 135 from 9:00 am to 4:00 pm

- Rock and mineral identification – Scott Hall Room 206 from 11:00am to 2:00 pm
- Make-and-take stations for kids (all ages) - Geology Museum from 11:00 am to 3:00 pm

Hands-on activity sessions for kids (ages 8+) in Scott Hall

11:00 am - 12:00 pm	Room 203	Outbreak
	Room 204	Stone Tools
	Room 205	Earth Impact
2:00 pm - 3:00 pm	Room 203	Outbreak
	Room 204	Stone Tools
	Room 205	Earth Impact
3:00 pm - 4:00 pm	Room 203	Outbreak
	Room 204	Stone Tools
	Room 205	Earth Impact



Educators who attend Museum presentations can receive credit toward their professional development requirements. The Geology Museum is registered as a provider with the NJ Department of Education.

CART Captioning Services will be available for all RUGM lectures. Contact the museum at 848-932-7243 or at museum@rci.rutgers.edu for more information about this event.

Check out our website at <http://geologymuseum.rutgers.edu>